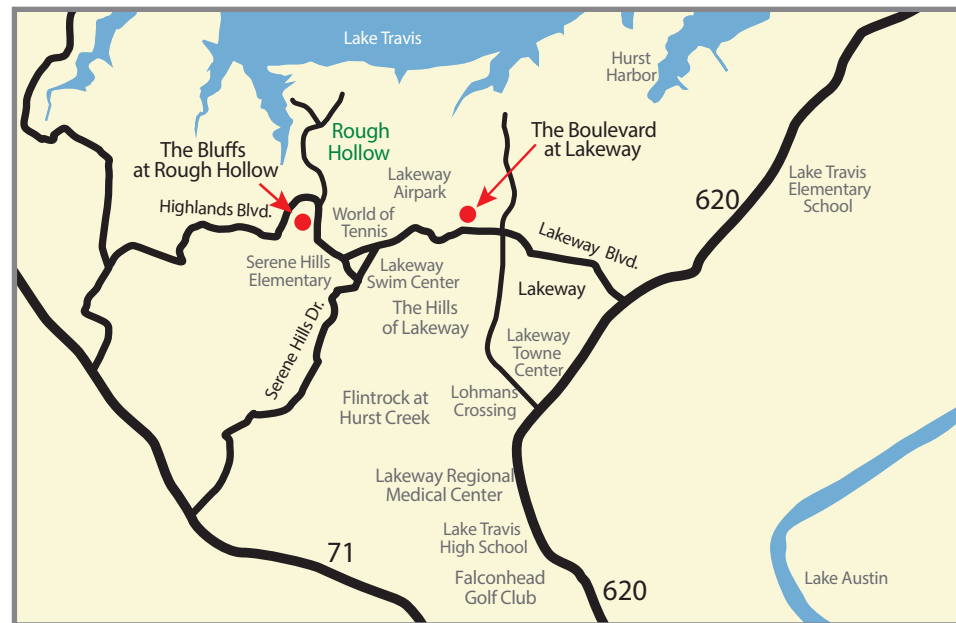


Rough Hollow. An intimate waterfront enclave with breathtaking hilltop views of Lake Travis is nestled in the Lakeway community. This master-planned community of more than 1,800 acres is located just 25 minutes from downtown Austin. It offers beautifully crafted homes suited to a variety of tastes and lifestyles. Now, Wes Peoples Homes brings over 30 years of visionary homebuild-

ing experience to Rough Hollow - a great compliment to an already distinguished development. Here the active lifestyle is redefined with activities such as golf, tennis, hiking and flying, plus scuba, sailing, waterskiing and even parasailing. The completion of Highland Village, a water themed center where families can gather to socialize, dine, play and relax, will complete the communities resort-style amenities.



Wes Peoples Homes develops and builds new design residential communities in thoughtfully selected sites in the city's central core and in unique and well-located neighborhoods and communities surrounding the city. In each location—whether urban, lakeside, or suburban—these are homes and communities where community design, architectural originality, quality of life, connection to nature and access to work, lifestyle amenities and community resources have a high priority. www.WesPeoplesHomes.com



Elevation 'A'

Plan 3067
3,367 sq. ft. liveable area
114 Bisset Court



Homes by Wes Peoples Homes
www.WesPeoplesHomes.com
512 - 994 - 4151



Floor Plan



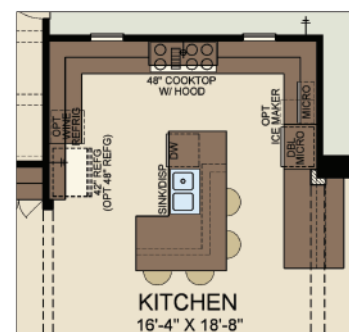
**For more Information,
Contact:**

512-994-4151

Wes Peoples Homes

Plan: 3067
3,367 sq. ft.
of livable space

- One Story
- 4 Total Bedrooms,
3 Bathrooms Including
Casita off Front Courtyard
- Covered Patio
- Drop Zone
- Study
- 3 Car Garage
- Courtyard
- Tile Roof
- Optional Kitchen w/
Double Oven
- Optional Wine Refrigerator



OPTIONAL KITCHEN W/
DOUBLE OVEN

* Prices, terms, specifications, and availability are subject to change without notice.
Elevation and floor plans are artist renderings and are subject to change.